

Join Today!

MEMBERSHIP APPLICATION

☐ New Member ☐ Renewal

Annual Membership Investment

- ☐ Individuals: \$79/yr
- ☐ Small Business (1-3 employees): \$199
- ☐ Nonprofit: \$149/yr
- ☐ Corporate: \$349/yr

☐ **YES! We want to join the Fancy Feet Network.**

Please Print Clearly.

Name will appear in the membership directory as listed

Name: _____

Title: _____

Company Name: _____

Address: _____

City: _____

State: _____ Zip: _____ Country: _____

Phone: _____

Fax: _____

E-mail: _____

Project/Volunteer Committee Interest:

- ☐ Workshops & Seminars
- ☐ Clothing / Food / Toy Drive
- ☐ Special Events & Planning
- ☐ Social Services / Employment / Reentry Council
- ☐ Newsletter / Media Outreach
- ☐ Fundraising & Community Outreach
- ☐ Entrepreneurial Programs
- ☐ Micro Credit Program
- ☐ Cultural Arts
- ☐ Other: _____

Enclosed is my check or money order for \$ _____
 payable to: **Fancy Feet Network**
 Mail to: P.O. Box 452628, Los Angeles, CA 90045
 877.326.2971



Fancy Feet Network
 P.O. Box 452628
 Los Angeles, CA 90045



...COMMITTED TO SERVE

Our Mission:

We live, learn, earn and give back to raise awareness of the power of advocacy for positive social change.

Our Goal:

To create opportunities for self-sufficiency and to reduce human suffering through child welfare, education, health care and international relief. To mobilize the power and passion of women working together to make the world a better place one step at a time.

7 "C's" of Good Stewardship

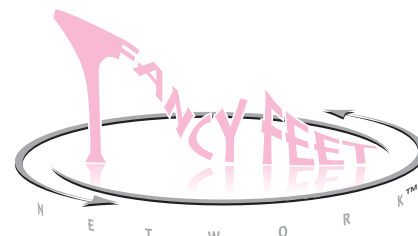
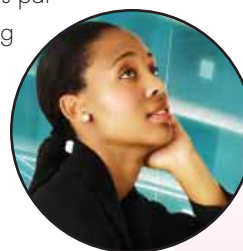
- Connect – To the needs of our communities
- Change – Social conditions
- Create – Programs that impact and engage
- Collaborate – With others & mentor
- Commit – To causes we support with time, resources & volunteerism
- Celebrate – Life, living and the joy of giving
- Communicate – Good news with others



Fancy Feet Network is a membership organization focusing on contemporary issues facing women. Strategically aligned with like minded professionals and organizations in support of health, wellness, empowerment and economic development, the **Fancy Feet Network** is committed to preserve growth, dignity, and grace through life's inevitable process of change.

Fancy Feet Network guides and mentors individuals by cultivating a dynamic resource network. We encourage our members to reach their highest potential by delivering services to improve their economic, career, and business opportunities through networking events, educational materials, wellness programs, and a host of interactive discussion, seminar and workshop events.

Fancy Feet Network raises awareness, helps to educate & creates access to experts and resources that represent a rich cultural diversity and global perspectives. Mentors participate from a strategic network of talent including skilled consultants, entrepreneurs, corporate and social service experts, small business owners from the financial, health, fashion, beauty, arts, entertainment, and e-consultant professionals of the internet technology industries.



More Than Sandals, Slippers & Pumps...

FancyFeetNetwork.org

MEMBERSHIP BENEFITS

\$380 Value



- Recognition as an active member of a strategic global network committed to serving others
- Access to resource guides, publications and information
- Member discount rates for marketing and advertising opportunities to increase visibility for your business
- Listing in the annual professional business directory and resource guide
- Educational, personal and professional development workshops, seminars and forums
- Exclusive invitations to promotional activities, conferences, retreats and social networking events
- Complimentary 1 year subscription to Stylish Attitudes™ Magazine & customized Stylish Attitudes™ eBiz Card
- "E-Z" Entrepreneur's Micro Credit Program
- Participating corporate discounts and special offers
- Online webinar and teleconference events
- Member to Member discounts & more!

Get Connected! Join the **Fancy Feet Network™** today!

P.O. Box 452628
Los Angeles, CA 90045
www.FancyFeetNetwork.org

**Subject to program terms.*

